

# Allocation Update

March 21, 2011

Updated with final 2009 and preliminary 2010 data (3/18/2011) C. Blair

Data Status:

| Year(s)   | Contrib. | Price | Weight |
|-----------|----------|-------|--------|
| 1994-2008 | F        | F     | F      |
| 2009      | F        | F     | F      |
| 2010      | P        | P     | P      |

F = Final; P= Preliminary

Data currently matches ADF&G version of allocation for 1994-2010.

## Contents

| Page # | Contents   |
|--------|--|
| 1      | Title page (this page)   |
| 2      | SE Enhanced Salmon Value by Gear with percentages                          |
| 3      | 5-yr rolling average graphs  |
| 4      | 5-yr rolling average table   |
| 5      | SE Enhanced Salmon <a href="#">Value by Gear</a> - with graph              |
| 6      | SE Enhanced Salmon <a href="#">Value by Agency</a> - with graph            |
| 7      | SE Enhanced Salmon <a href="#">Value by Species</a> - with graph           |
| 8-9    | SE Enhanced Salmon <a href="#">Value by Agency &amp; Gear</a> - with graph |
| 10     | SE Enhanced Salmon Rebalance calculations                                  |

Allocation Summary  
SE Enhanced Salmon Value by Gear

|           |       |
|-----------|-------|
| Species   | (All) |
| Sale Type | (All) |

| Sum of Value       | Gear              |                    |                    |                    |
|--------------------|-------------------|--------------------|--------------------|--------------------|
| Year               | troll             | seine              | gillnet            | Grand Total        |
| 1994               | 5,317,271         | 8,876,576          | 3,797,692          | 17,991,540         |
| 1995               | 2,871,032         | 14,789,338         | 7,169,053          | 24,829,423         |
| 1996               | 3,224,761         | 12,061,185         | 4,184,597          | 19,470,543         |
| 1997               | 3,004,073         | 10,752,998         | 4,037,169          | 17,794,241         |
| 1998               | 1,973,521         | 9,277,676          | 3,792,912          | 15,044,109         |
| 1999               | 3,461,492         | 10,061,642         | 4,110,113          | 17,633,247         |
| 2000               | 3,465,550         | 17,113,326         | 6,219,903          | 26,798,778         |
| 2001               | 3,752,912         | 7,170,159          | 4,852,294          | 15,775,364         |
| 2002               | 2,303,490         | 3,645,488          | 3,627,174          | 9,576,152          |
| 2003               | 2,774,408         | 3,744,188          | 3,385,285          | 9,903,881          |
| 2004               | 4,139,539         | 5,498,187          | 5,400,059          | 15,037,785         |
| 2005               | 3,522,736         | 4,405,236          | 4,707,650          | 12,635,622         |
| 2006               | 4,192,671         | 15,109,033         | 12,215,370         | 31,517,075         |
| 2007               | 4,728,923         | 6,531,971          | 8,851,525          | 20,112,418         |
| 2008               | 7,320,371         | 16,158,998         | 16,385,073         | 39,864,442         |
| 2009               | 3,984,258         | 12,746,563         | 12,253,958         | 28,984,778.82      |
| 2010               | 6,547,654         | 14,940,114         | 14,415,196         | 35,902,963.69      |
| <b>Grand Total</b> | <b>66,584,662</b> | <b>172,882,679</b> | <b>119,405,022</b> | <b>358,872,363</b> |

|                |    |           |    |            |    |           |    |            |
|----------------|----|-----------|----|------------|----|-----------|----|------------|
| <b>Average</b> | \$ | 3,916,745 | \$ | 10,169,569 | \$ | 7,023,825 | \$ | 21,110,139 |
| <b>Percent</b> |    | 19%       |    | 48%        |    | 33%       |    | 100%       |
| <b>Target</b>  |    | 27-32%    |    | 44-49%     |    | 24-29%    |    |            |

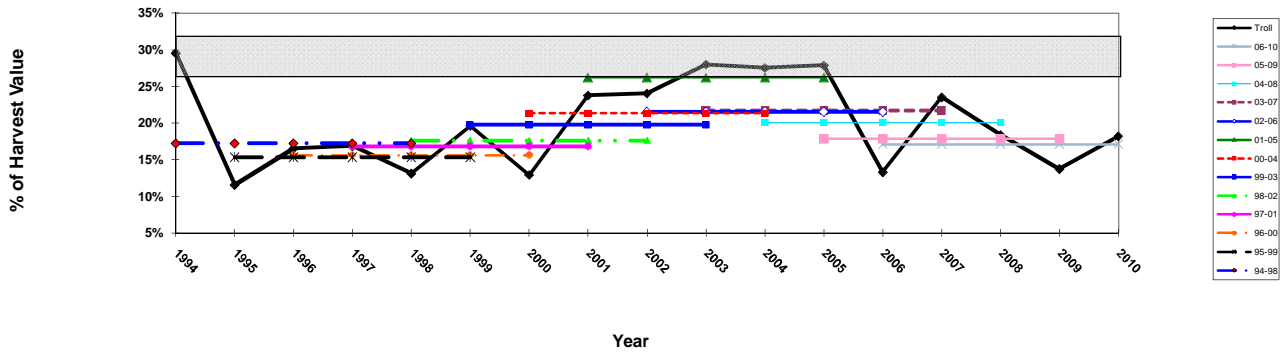
*\*2010 data is preliminary*

Updated with FINAL 2009 and preliminary 2010 data (3.18.11 cb)

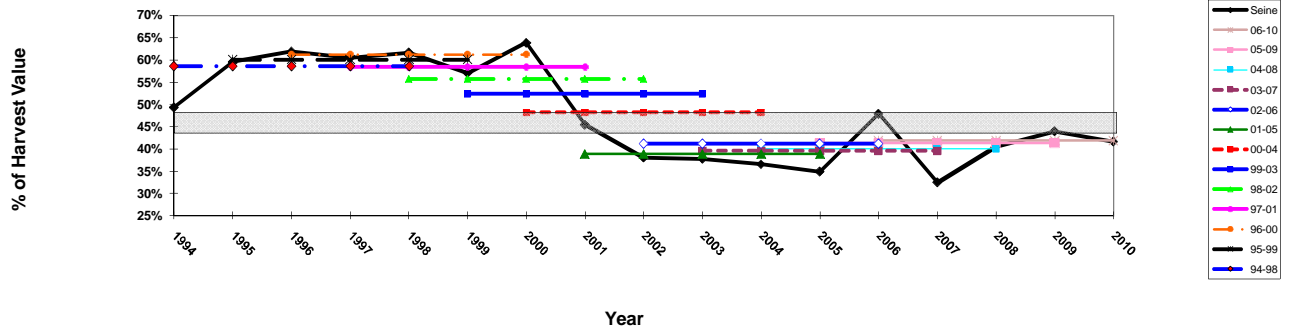
|           |       |
|-----------|-------|
| Species   | (All) |
| Sale Type | (All) |

| Sum of Value       | Gear       |            |            |             |
|--------------------|------------|------------|------------|-------------|
| Year               | troll      | seine      | gillnet    | Grand Total |
| 1994               | 30%        | 49%        | 21%        | 100%        |
| 1995               | 12%        | 60%        | 29%        | 100%        |
| 1996               | 17%        | 62%        | 21%        | 100%        |
| 1997               | 17%        | 60%        | 23%        | 100%        |
| 1998               | 13%        | 62%        | 25%        | 100%        |
| 1999               | 20%        | 57%        | 23%        | 100%        |
| 2000               | 13%        | 64%        | 23%        | 100%        |
| 2001               | 24%        | 45%        | 31%        | 100%        |
| 2002               | 24%        | 38%        | 38%        | 100%        |
| 2003               | 28%        | 38%        | 34%        | 100%        |
| 2004               | 28%        | 37%        | 36%        | 100%        |
| 2005               | 28%        | 35%        | 37%        | 100%        |
| 2006               | 13%        | 48%        | 39%        | 100%        |
| 2007               | 24%        | 32%        | 44%        | 100%        |
| 2008               | 18%        | 41%        | 41%        | 100%        |
| 2009               | 14%        | 44%        | 42%        | 100%        |
| 2010               | 18%        | 42%        | 40%        | 100%        |
| <b>Grand Total</b> | <b>19%</b> | <b>48%</b> | <b>33%</b> | <b>100%</b> |

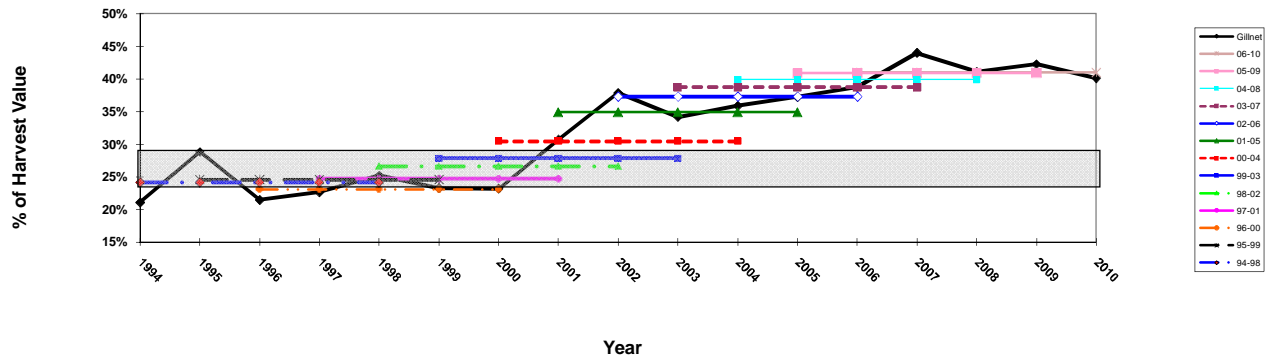
All SE Enhanced Salmon-Troll (allocative range 27-32%)



All SE Enhanced Salmon-Seine (allocative range 44-49%)



All SE Enhanced Salmon-Gillnet (allocative range 24-29%)



5-Year Rolling Averages for Gear Groups

Source: ADF&G ESTIMATES (SE ALLOCATION DATA FROM ADF&G)

| Period | SE    |         |       | TOTAL |
|--------|-------|---------|-------|-------|
|        | Troll | Gillnet | Seine |       |
| 94-98  | 17%   | 24%     | 59%   | 100%  |
| 95-99  | 15%   | 25%     | 60%   | 100%  |
| 96-00  | 16%   | 23%     | 61%   | 100%  |
| 97-01  | 17%   | 25%     | 58%   | 100%  |
| 98-02  | 18%   | 27%     | 56%   | 100%  |
| 99-03  | 20%   | 28%     | 52%   | 100%  |
| 00-04  | 21%   | 30%     | 48%   | 100%  |
| 01-05  | 26%   | 35%     | 39%   | 100%  |
| 02-06  | 22%   | 37%     | 41%   | 100%  |
| 03-07  | 22%   | 39%     | 40%   | 100%  |
| 04-08  | 20%   | 40%     | 40%   | 100%  |
| 05-09* | 18%   | 41%     | 41%   | 100%  |
| 06-10* | 17%   | 41%     | 42%   | 100%  |

ALL Years

|        |     |     |     |
|--------|-----|-----|-----|
| 94-10* | 19% | 33% | 48% |
|--------|-----|-----|-----|

|       |       |       |
|-------|-------|-------|
| Troll | Drift | Purse |
|-------|-------|-------|

Target      27-32%      24-29%      44-49%

Color code:    below range    in range    above range

\*2010 data is preliminary

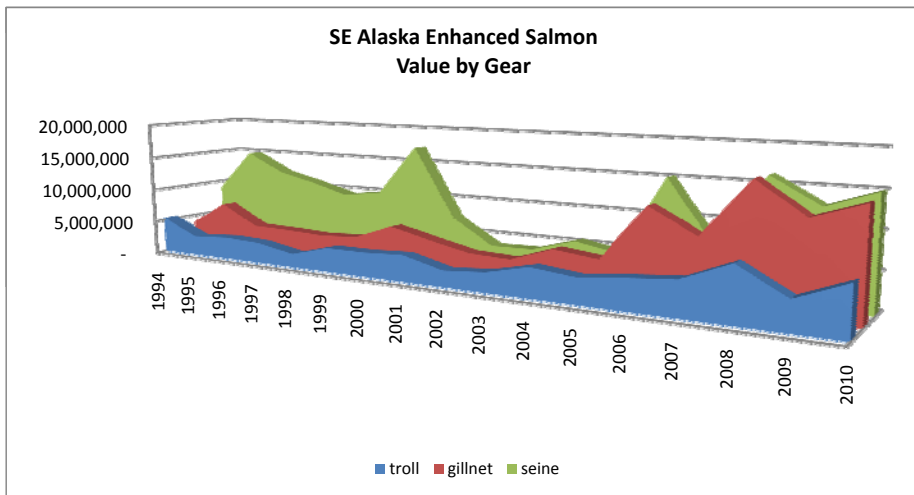
CHART 1 Data: Value by GEAR

|            |       |
|------------|-------|
| Area (N-S) | (All) |
| Group      | (All) |
| Agency     | (All) |
| Project    | (All) |
| Species    | (All) |

| Sum of Value<br>Year | Gear       |             |             | Grand Total |
|----------------------|------------|-------------|-------------|-------------|
|                      | troll      | gillnet     | seine       |             |
| 1994                 | 5,317,271  | 3,797,692   | 8,876,576   | 17,991,540  |
| 1995                 | 2,871,032  | 7,169,053   | 14,789,338  | 24,829,423  |
| 1996                 | 3,224,761  | 4,184,597   | 12,061,185  | 19,470,543  |
| 1997                 | 3,004,073  | 4,037,169   | 10,752,998  | 17,794,241  |
| 1998                 | 1,973,521  | 3,792,912   | 9,277,676   | 15,044,109  |
| 1999                 | 3,461,492  | 4,110,113   | 10,061,642  | 17,633,247  |
| 2000                 | 3,465,550  | 6,219,903   | 17,113,326  | 26,798,778  |
| 2001                 | 3,752,912  | 4,852,294   | 7,170,159   | 15,775,364  |
| 2002                 | 2,303,490  | 3,627,174   | 3,645,488   | 9,576,152   |
| 2003                 | 2,774,408  | 3,385,285   | 3,744,188   | 9,903,881   |
| 2004                 | 4,139,539  | 5,400,059   | 5,498,187   | 15,037,785  |
| 2005                 | 3,522,736  | 4,707,650   | 4,405,236   | 12,635,622  |
| 2006                 | 4,192,671  | 12,215,370  | 15,109,033  | 31,517,075  |
| 2007                 | 4,728,923  | 8,851,525   | 6,531,971   | 20,112,418  |
| 2008                 | 7,320,371  | 16,385,073  | 16,158,998  | 39,864,442  |
| 2009                 | 3,984,258  | 12,253,958  | 12,746,563  | 28,984,779  |
| 2010                 | 6,547,654  | 14,415,196  | 14,940,114  | 35,902,964  |
| Grand Total          | 66,584,662 | 119,405,022 | 172,882,679 | 358,872,363 |

19%
33%
48%
100.0%

\*2010 data is preliminary

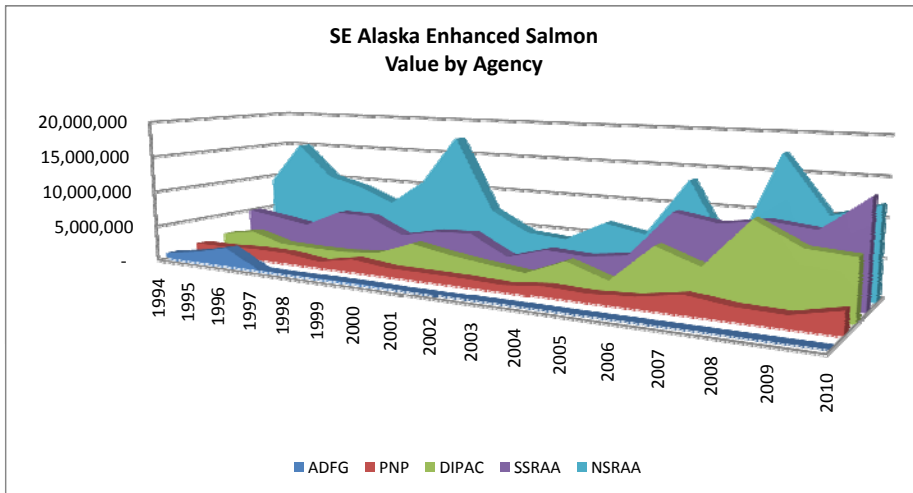


**CHART 2 Data: Value by Agency (Group)**

|            |       |
|------------|-------|
| Area (N-S) | (All) |
| Agency     | (All) |
| Project    | (All) |
| Species    | (All) |
| Gear       | (All) |

| Sum of Value       | Group            |                   |                   |                    |                    |  | Grand Total        |
|--------------------|------------------|-------------------|-------------------|--------------------|--------------------|--|--------------------|
| Year               | ADFG             | PNP               | DIPAC             | SSRAA              | NSRAA              |  |                    |
| 1994               | 789,797          | 1,301,434         | 1,956,212         | 4,869,328          | 9,074,768          |  | 17,991,540         |
| 1995               | 1,487,949        | 1,316,398         | 2,768,811         | 4,230,686          | 15,025,579         |  | 24,829,423         |
| 1996               | 2,596,512        | 1,551,262         | 1,438,937         | 3,507,330          | 10,376,503         |  | 19,470,543         |
| 1997               | 82,349           | 1,476,876         | 1,319,795         | 5,830,664          | 9,084,558          |  | 17,794,241         |
| 1998               | 32,188           | 877,030           | 1,320,724         | 5,754,818          | 7,059,349          |  | 15,044,109         |
| 1999               | 98,118           | 1,788,975         | 1,769,205         | 3,437,463          | 10,539,486         |  | 17,633,247         |
| 2000               | 105,152          | 1,193,915         | 3,634,294         | 4,477,078          | 17,388,339         |  | 26,798,778         |
| 2001               |                  | 1,176,116         | 2,689,386         | 4,686,253          | 7,223,610          |  | 15,775,364         |
| 2002               |                  | 1,108,314         | 1,977,820         | 1,996,975          | 4,493,044          |  | 9,576,152          |
| 2003               |                  | 901,720           | 1,398,974         | 3,505,304          | 4,097,883          |  | 9,903,881          |
| 2004               |                  | 1,406,135         | 3,566,574         | 3,228,765          | 6,836,311          |  | 15,037,785         |
| 2005               |                  | 1,197,751         | 1,710,106         | 3,921,308          | 5,806,457          |  | 12,635,622         |
| 2006               |                  | 1,479,574         | 6,653,347         | 9,974,541          | 13,409,613         |  | 31,517,075         |
| 2007               |                  | 2,417,251         | 4,692,473         | 9,047,698          | 3,954,995          |  | 20,112,418         |
| 2008               |                  | 1,719,784         | 10,836,696        | 9,866,703          | 17,441,259         |  | 39,864,442         |
| 2009               |                  | 1,570,408         | 7,992,886         | 9,255,355          | 10,166,130         |  | 28,984,779         |
| 2010               |                  | 2,817,238         | 7,612,308         | 13,594,562         | 11,878,856         |  | 35,902,964         |
| <b>Grand Total</b> | <b>5,192,065</b> | <b>25,300,180</b> | <b>63,338,547</b> | <b>101,184,830</b> | <b>163,856,740</b> |  | <b>358,872,363</b> |
|                    | 1%               | 7%                | 18%               | 28%                | 46%                |  | 100%               |

\*2010 data is preliminary



**CHART 3 Data: Value by Species**

|            |       |
|------------|-------|
| Area (N-S) | (All) |
| Agency     | (All) |
| Project    | (All) |
| Gear       | (All) |
| Group      | (All) |

| Sum of Value<br>Year | Species          |                   |                   |                   |                    | Grand Total        |
|----------------------|------------------|-------------------|-------------------|-------------------|--------------------|--------------------|
|                      | 440 Pink         | 420 Sockeye       | 410 Chinook       | 430 Coho          | 450 Chum           |                    |
| 1994                 | 1,299,087        | 1,331,095         | 780,967           | 5,109,117         | 9,471,273          | 17,991,540         |
| 1995                 | 1,098,853        | 1,135,216         | 1,036,806         | 2,242,814         | 19,315,734         | 24,829,423         |
| 1996                 | 317,238          | 3,344,442         | 1,059,328         | 2,410,636         | 12,338,899         | 19,470,543         |
| 1997                 | 326,069          | 1,736,056         | 845,646           | 1,955,302         | 12,931,167         | 17,794,241         |
| 1998                 | 416,394          | 1,336,404         | 279,626           | 2,364,637         | 10,647,049         | 15,044,109         |
| 1999                 | 336,150          | 928,991           | 585,386           | 3,542,350         | 12,240,370         | 17,633,247         |
| 2000                 | 116,401          | 1,086,574         | 1,305,865         | 1,741,538         | 22,548,400         | 26,798,778         |
| 2001                 | 461,237          | 1,450,389         | 948,813           | 1,971,346         | 10,943,579         | 15,775,364         |
| 2002                 | 303,541          | 452,986           | 691,766           | 2,029,949         | 6,097,911          | 9,576,152          |
| 2003                 | 168,640          | 492,710           | 737,275           | 2,380,754         | 6,124,501          | 9,903,881          |
| 2004                 | 219,316          | 1,857,193         | 1,707,179         | 2,900,760         | 8,353,336          | 15,037,785         |
| 2005                 | 321,383          | 849,285           | 1,338,716         | 2,365,511         | 7,760,728          | 12,635,622         |
| 2006                 | 204,285          | 1,611,367         | 1,464,156         | 3,191,502         | 25,045,764         | 31,517,075         |
| 2007                 | 441,327          | 944,993           | 2,223,888         | 3,139,585         | 13,362,626         | 20,112,418         |
| 2008                 | 137,611          | 612,563           | 3,845,641         | 5,529,462         | 29,739,165         | 39,864,442         |
| 2009                 | 576,194          | 450,070           | 1,979,406         | 2,399,912         | 23,579,197         | 28,984,779         |
| 2010                 | 651,782          | 568,261           | 2,171,989         | 4,415,222         | 28,095,710         | 35,902,964         |
| <b>Grand Total</b>   | <b>7,395,509</b> | <b>20,188,594</b> | <b>23,002,453</b> | <b>49,690,396</b> | <b>258,595,411</b> | <b>358,872,363</b> |
|                      | 2%               | 6%                | 6%                | 14%               | 72%                | 100%               |

\*2010 data is preliminary

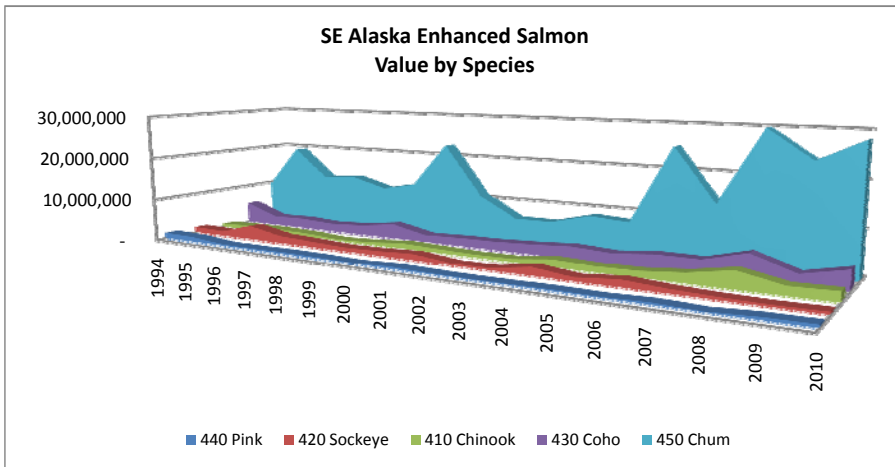


CHART 2 (gillnet) Data: Value by Agency (Group)

|            |         |
|------------|---------|
| Area (N-S) | (All)   |
| Agency     | (All)   |
| Project    | (All)   |
| Species    | (All)   |
| Gear       | gillnet |

| Sum of Value | Group     |           |            |            |            |  |             |
|--------------|-----------|-----------|------------|------------|------------|--|-------------|
| Year         | ADFG      | PNP       | DIPAC      | SSRAA      | NSRAA      |  | Grand Total |
| 1994         | 367,007   | 89,406    | 1,067,316  | 1,970,936  | 303,027    |  | 3,797,692   |
| 1995         | 794,418   | 259,726   | 2,675,249  | 1,924,318  | 1,515,342  |  | 7,169,053   |
| 1996         | 406,180   | 1,022,361 | 1,287,897  | 1,115,334  | 352,825    |  | 4,184,597   |
| 1997         | 8,587     | 430,591   | 1,254,935  | 1,468,157  | 874,899    |  | 4,037,169   |
| 1998         | 8,867     | 234,931   | 1,160,947  | 1,431,868  | 956,300    |  | 3,792,912   |
| 1999         | 10,521    | 455,178   | 1,509,974  | 1,105,718  | 1,028,722  |  | 4,110,113   |
| 2000         | 3,240     | 224,321   | 3,414,389  | 1,120,006  | 1,457,947  |  | 6,219,903   |
| 2001         |           | 153,633   | 2,324,332  | 1,445,519  | 928,809    |  | 4,852,294   |
| 2002         |           | 316,492   | 1,874,792  | 685,671    | 750,220    |  | 3,627,174   |
| 2003         |           | 169,992   | 1,136,376  | 1,412,202  | 666,714    |  | 3,385,285   |
| 2004         |           | 531,792   | 2,547,864  | 987,175    | 1,333,228  |  | 5,400,059   |
| 2005         |           | 290,610   | 1,289,686  | 1,484,249  | 1,643,105  |  | 4,707,650   |
| 2006         |           | 485,046   | 5,866,818  | 3,559,419  | 2,304,088  |  | 12,215,370  |
| 2007         |           | 701,186   | 4,286,374  | 3,450,366  | 413,599    |  | 8,851,525   |
| 2008         |           | 415,484   | 10,474,635 | 3,976,720  | 1,518,234  |  | 16,385,073  |
| 2009         |           | 280,419   | 7,636,646  | 3,540,355  | 796,538    |  | 12,253,958  |
| 2010         |           | 476,509   | 7,247,319  | 5,091,480  | 1,599,888  |  | 14,415,196  |
| Grand Total  | 1,598,819 | 6,537,676 | 57,055,550 | 35,769,492 | 18,443,486 |  | 119,405,022 |
|              | 1.3%      | 5.5%      | 47.8%      | 30.0%      | 15.4%      |  | 100.0%      |

\*2010 data is preliminary

CHART 2 (seine) Data: Value by Agency (Group)

|            |       |
|------------|-------|
| Area (N-S) | (All) |
| Agency     | (All) |
| Project    | (All) |
| Species    | (All) |
| Gear       | seine |

| Sum of Value | Group     |            |           |            |             |  |             |
|--------------|-----------|------------|-----------|------------|-------------|--|-------------|
| Year         | ADFG      | PNP        | DIPAC     | SSRAA      | NSRAA       |  | Grand Total |
| 1994         | 257,112   | 895,984    | 268,271   | 1,439,420  | 6,015,789   |  | 8,876,576   |
| 1995         | 612,524   | 814,451    | 1,740     | 1,725,785  | 11,634,838  |  | 14,789,338  |
| 1996         | 2,083,527 | 294,486    | 5,101     | 1,648,705  | 8,029,365   |  | 12,061,185  |
| 1997         | 963       | 532,204    | 2,572     | 3,635,770  | 6,581,490   |  | 10,752,998  |
| 1998         | 3,385     | 542,077    | 4,895     | 3,563,249  | 5,164,071   |  | 9,277,676   |
| 1999         | 4,544     | 1,186,731  | 13,355    | 1,329,437  | 7,527,574   |  | 10,061,642  |
| 2000         | 40        | 706,428    | 36,339    | 2,538,753  | 13,831,765  |  | 17,113,326  |
| 2001         |           | 586,307    | 211,278   | 1,856,187  | 4,516,387   |  | 7,170,159   |
| 2002         |           | 433,104    | 24,932    | 521,000    | 2,666,451   |  | 3,645,488   |
| 2003         |           | 394,304    | 173,901   | 656,365    | 2,519,618   |  | 3,744,188   |
| 2004         |           | 612,933    | 815,951   | 528,978    | 3,540,325   |  | 5,498,187   |
| 2005         |           | 482,229    | 310,781   | 1,328,604  | 2,283,622   |  | 4,405,236   |
| 2006         |           | 555,409    | 661,834   | 4,953,569  | 8,938,222   |  | 15,109,033  |
| 2007         |           | 618,106    | 308,463   | 3,646,757  | 1,958,645   |  | 6,531,971   |
| 2008         |           | 405,492    | 76,254    | 3,635,088  | 12,042,165  |  | 16,158,998  |
| 2009         |           | 841,273    | 280,314   | 3,461,797  | 8,163,179   |  | 12,746,563  |
| 2010         |           | 1,479,316  | 15,775    | 5,278,044  | 8,166,978   |  | 14,940,114  |
| Grand Total  | 2,962,096 | 11,380,833 | 3,211,756 | 41,747,509 | 113,580,484 |  | 172,882,679 |
|              | 1.7%      | 6.6%       | 1.9%      | 24.1%      | 65.7%       |  | 100.0%      |

\*2010 data is preliminary

CHART 2 (troll) Data: Value by Agency (Group)

|            |       |
|------------|-------|
| Area (N-S) | (All) |
| Agency     | (All) |
| Project    | (All) |
| Species    | (All) |
| Gear       | troll |

| Sum of Value | Group   |           |           |            |            |  | Grand Total |
|--------------|---------|-----------|-----------|------------|------------|--|-------------|
| Year         | ADFG    | PNP       | DIPAC     | SSRAA      | NSRAA      |  |             |
| 1994         | 165,678 | 316,044   | 620,625   | 1,458,972  | 2,755,952  |  | 5,317,271   |
| 1995         | 81,007  | 242,221   | 91,822    | 580,582    | 1,875,399  |  | 2,871,032   |
| 1996         | 106,804 | 234,414   | 145,939   | 743,291    | 1,994,312  |  | 3,224,761   |
| 1997         | 72,799  | 514,082   | 62,287    | 726,736    | 1,628,169  |  | 3,004,073   |
| 1998         | 19,936  | 100,023   | 154,882   | 759,701    | 938,978    |  | 1,973,521   |
| 1999         | 83,053  | 147,067   | 245,875   | 1,002,307  | 1,983,190  |  | 3,461,492   |
| 2000         | 101,872 | 263,166   | 183,566   | 818,319    | 2,098,627  |  | 3,465,550   |
| 2001         |         | 436,175   | 153,776   | 1,384,546  | 1,778,414  |  | 3,752,912   |
| 2002         |         | 358,718   | 78,096    | 790,304    | 1,076,372  |  | 2,303,490   |
| 2003         |         | 337,424   | 88,696    | 1,436,737  | 911,551    |  | 2,774,408   |
| 2004         |         | 261,410   | 202,759   | 1,712,612  | 1,962,758  |  | 4,139,539   |
| 2005         |         | 424,912   | 109,639   | 1,108,456  | 1,879,730  |  | 3,522,736   |
| 2006         |         | 439,119   | 124,696   | 1,461,553  | 2,167,303  |  | 4,192,671   |
| 2007         |         | 1,097,960 | 97,636    | 1,950,575  | 1,582,752  |  | 4,728,923   |
| 2008         |         | 898,808   | 285,807   | 2,254,896  | 3,880,861  |  | 7,320,371   |
| 2009         |         | 448,716   | 75,926    | 2,253,203  | 1,206,412  |  | 3,984,258   |
| 2010         |         | 861,413   | 349,213   | 3,225,038  | 2,111,990  |  | 6,547,654   |
| Grand Total  | 631,150 | 7,381,671 | 3,071,241 | 23,667,829 | 31,832,770 |  | 66,584,662  |
|              | 0.9%    | 11.1%     | 4.6%      | 35.5%      | 47.8%      |  | 100.0%      |

\*2010 data is preliminary

## Allocation - Estimate to Rebalance

Most Recent 5-year period (may include preliminary data - see note below)

|            |       |
|------------|-------|
| Area (N-S) | (All) |
| Group      | (All) |
| Agency     | (All) |
| Project    | (All) |
| Species    | (All) |

| Sum of Value | Year       |            |            |            |            | Grand Total |
|--------------|------------|------------|------------|------------|------------|-------------|
| Gear         | 2006       | 2007       | 2008       | 2009       | 2010       |             |
| troll        | 4,192,671  | 4,728,923  | 7,320,371  | 3,984,258  | 6,547,654  | 26,773,876  |
| seine        | 15,109,033 | 6,531,971  | 16,158,998 | 12,746,563 | 14,940,114 | 65,486,679  |
| gillnet      | 12,215,370 | 8,851,525  | 16,385,073 | 12,253,958 | 14,415,196 | 64,121,122  |
| Grand Total  | 31,517,075 | 20,112,418 | 39,864,442 | 28,984,779 | 35,902,964 | 156,381,677 |

\*2010 data is preliminary

| Gear    | 2006-10       |         | Target | MidPoint | Under/Over |
|---------|---------------|---------|--------|----------|------------|
|         | Average       | Percent | Range  |          | MidPoint   |
| troll   | \$ 5,355,000  | 17%     | 27-32% | 28.8%    | -11.7%     |
| seine   | \$ 13,097,000 | 42%     | 44-49% | 45.4%    | -3.5%      |
| gillnet | \$ 12,824,000 | 41%     | 24-29% | 25.9%    | 15.1%      |
| Total   | \$ 31,276,000 | 100%    |        | 100.0%   |            |

### Commercial Ex-Vessel Value of All SE Enhanced Salmon

Calculation of Adjustments needed to bring gear groups back into range.

The latest 5-year average (2006-10) for total enhanced value is \$31,276,000 per year.

Using this value as the estimated annual value for the upcoming 5-year period, and applying the Mid-points of the target range:

| Mid-points of target ranges> |                | 28.8%         | 45.4%         | 25.9%         | 100.0%         |
|------------------------------|----------------|---------------|---------------|---------------|----------------|
|                              |                | Gear          |               |               |                |
| Period                       | PROJECTED      | troll         | purse         | Drift         | TOTAL          |
| 2011                         | \$ 31,276,000  | 9,001,000     | 14,189,000    | 8,086,000     | 31,276,000     |
| 2012                         | \$ 31,276,000  | 9,001,000     | 14,189,000    | 8,086,000     | 31,276,000     |
| 2013                         | \$ 31,276,000  | 9,001,000     | 14,189,000    | 8,086,000     | 31,276,000     |
| 2014                         | \$ 31,276,000  | 9,001,000     | 14,189,000    | 8,086,000     | 31,276,000     |
| 2015                         | \$ 31,276,000  | 9,001,000     | 14,189,000    | 8,086,000     | 31,276,000     |
| 5-yr                         | \$ 156,380,000 | \$ 45,005,000 | \$ 70,945,000 | \$ 40,430,000 | \$ 156,380,000 |
|                              |                | 28.8%         | 45.4%         | 25.9%         |                |
| 11-15 target                 |                | 9,001,000     | 14,189,000    | 8,086,000     | 31,276,000     |
| 06-10*                       | \$ 31,276,000  | \$ 5,355,000  | \$ 13,097,000 | \$ 12,824,000 | \$ 31,276,000  |
| Change required              |                | 3,646,000     | 1,092,000     | (4,738,000)   | -              |
| Percent change from 06-10*   |                | 68%           | 8%            | -37%          |                |