

Deep Inlet Schedule 2015

2015 Deep Inlet Forecast:

1,336,000 chum

Range (674,000 – 2,000,000)

Note: This document reflects pre-season planning. Always refer to ADF&G News Releases for official schedule of openings, fishing boundaries & in-season changes. 5/7/2015

2015 Deep Inlet Cost Recovery

- No CR harvest expected.
- We may harvest fish in Silver Bay if we have fish in excess of broodstock needs.





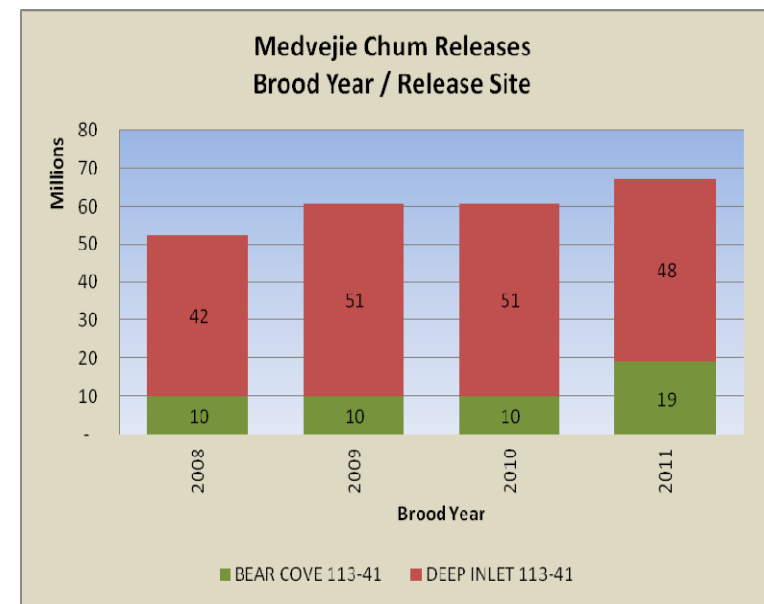
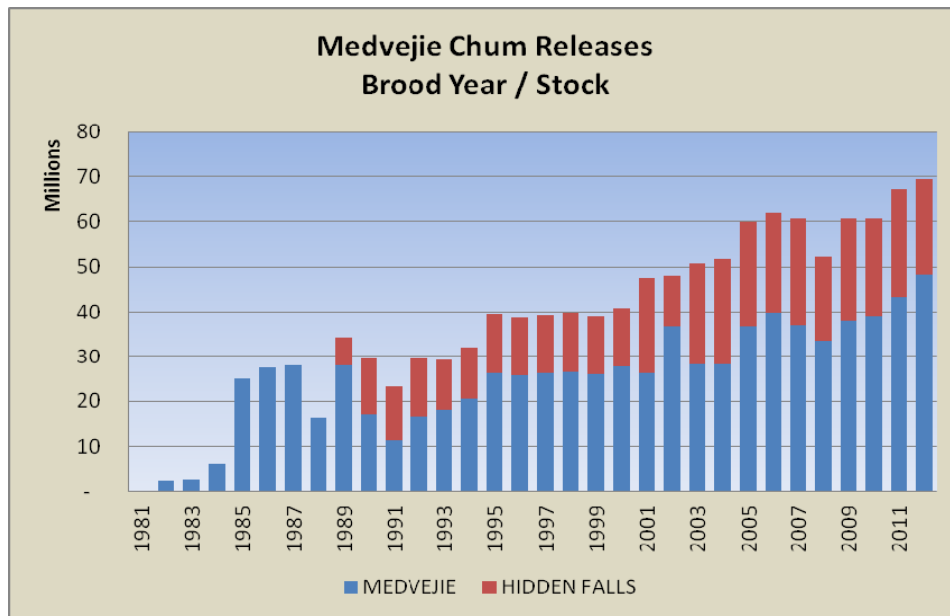
2015 Broodstock

- Broodstock Goal: 90,000 fish
- Re-opening plan if a Deep Inlet closure for broodstock is needed:
 - Re-open with a single troll day – the first day upon re-opening
 - NSRAA board decided NOT to allow the Troll day while CR is still in progress (Spring 2014).
 - Minimum of 24 hr notice; preferably 48 hrs.
 - We will attempt to close after a gillnet day, reopen (after troll) with a seine day, adjusting schedule as needed to maintain a 2:1 ratio for the season.



2015 Notes

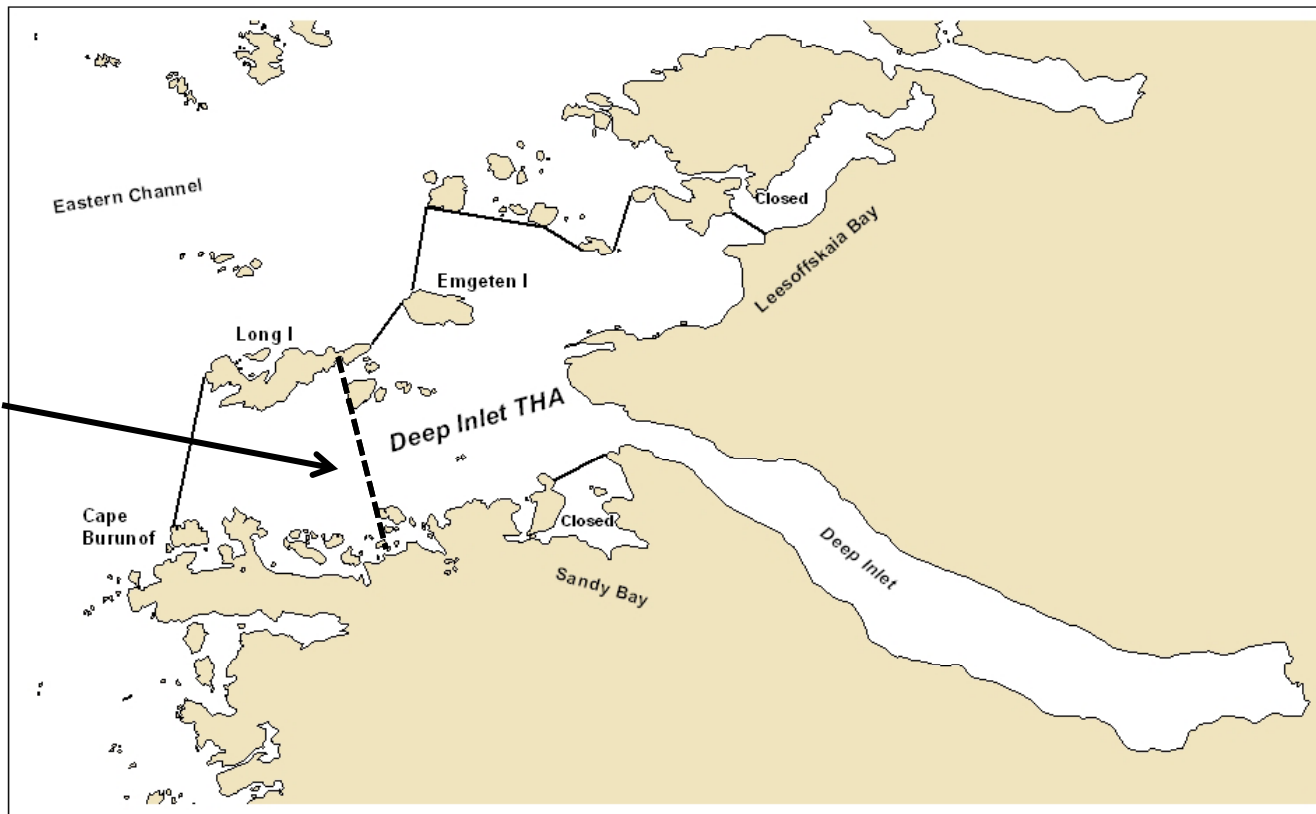
- BY11 (age 4) first BY with increase Bear Cove release
- BY11 (age 4) 4.6M fry of 19M Bear Cove are 4.0 program





2015 Notes

Deep Inlet
boundary
through 3rd
Saturday in
June



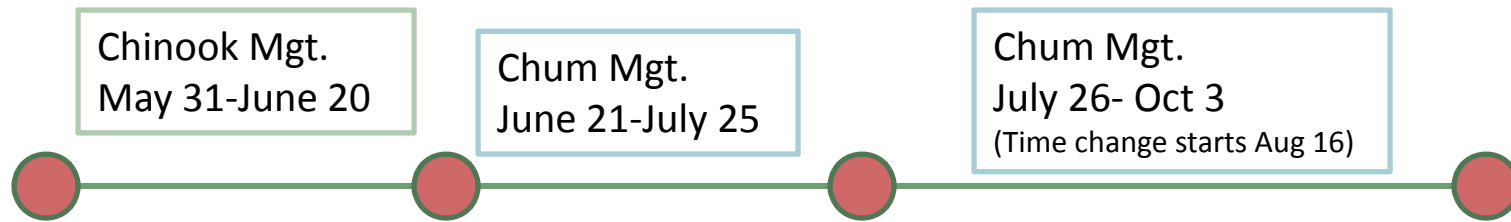
Deep Inlet Terminal Harvest Area

Western line modification for early-season Chinook management. The Deep Inlet THA is closed west of 135 degrees 20.75' W Longitude to purse seine and drift gillnet from the first emergency order of the season through the third Saturday in June.



2015 Schedule

Three periods of the Deep Inlet season:



2015

GN 2:1 SN

GN 1:1 SN

GN 2:1 SN

SUN - SN 5am – 8pm
 MON - GN 5am – 8pm
 TUE - GN 5am – 8pm
 WED - SN 5am – 8pm
 THU - GN 5am – 8pm
 FRI - GN 5am – 8pm
 SAT - TROLL

SUN - SN 5am – 8pm
 MON - GN 5am – 8pm
 TUE - GN 5am – 8pm
 WED - GN 5am – 8pm
 THU - SN 5am – 8pm
 FRI - SN 5am – 8pm
 SAT - TROLL

SUN - SN 5am – 8pm
 MON - GN 5am – 8pm
 TUE - GN 5am – 8pm
 WED - SN 5am – 8pm
 THU - GN 5am – 8pm
 FRI - GN 5am – 8pm
 SAT - TROLL

SUN - SN 6am – 9pm
 MON - GN 6am – 9pm
 TUE - GN 6am – 9pm
 WED - SN 6am – 9pm
 THU - GN 6am – 9pm
 FRI - GN 6am – 9pm
 SAT - TROLL

July 26 – Aug 15
 5 am – 8 pm

Aug 16 – Oct 3
 6 am – 9 pm

June 2015 Deep Inlet Schedule						
Sunday	Monday	Tuesday	Wednesday	Thursday	Friday	Saturday
May 31 Seine Chinook Mgt.	June 1 Gillnet	2 Gillnet	3 Seine	4 Gillnet	5 Gillnet	6 Troll
7	8	9	10	11	12	13
Chinook schedule: 4:2						
14	15	16	17	18	19	20
Gillnet fishermen will be required to fish a minimum mesh size of 6" prior to June 21						End Chinook Mgt.
21	22	23	24	25	26	27
Chum schedule: 3:3						
28	29	30	July 1	2	3	4

Season Opens Sunday, May 31.

Modified western THA boundary in effect until the 3rd Sunday in June. (June 21st this season.)

July 2015

Deep Inlet Schedule

Sunday	Monday	Tuesday	Wednesday	Thursday	Friday	Saturday
June 28 Seine	29 Gillnet	30 Gillnet	July 1 Gillnet	2 Seine	3 Seine	4 Troll
5	6	7	8	9	10	11
12	13	14	15	16	17	18
19	20	21	22	23	24	25
26 Seine	27 Gillnet	28 Gillnet	29 Seine	30 Gillnet	31 Gillnet	August 1 Troll

Chum schedule: 3:3

Chum schedule: 4:2

August 2015 Deep Inlet Schedule

Sunday	Monday	Tuesday	Wednesday	Thursday	Friday	Saturday
26 Seine	27 Gillnet	28 Gillnet	29 Seine	30 Gillnet	31 Gillnet	Aug 1 Troll
2	3	4	5	6	7	8
9	10	11	12	13	14	15
16 6 am start	17 6 am start	18	19	20	21	22
23 / 30	24 / 31	25	26	27	28	29

Chum schedule: 4:2

September 2015

Deep Inlet Schedule

Sunday	Monday	Tuesday	Wednesday	Thursday	Friday	Saturday
31 Seine	31 Gillnet	Sept 1 Gillnet	2 Seine	3 Gillnet	4 Gillnet	5 Troll
6	7	8	9	10	11	12
13	14	15	16	17	18	19
20	21	22	23	24	25	26
27	28	29	30	Oct 1	2	3

Chum schedule: 4:2