



Deep Inlet Schedule 2016

2016 Deep Inlet Forecast:

1,782,000 chum

Range (892,000 – 2,664,000)

Note: This document reflects pre-season planning. Always refer to ADF&G News Releases for official schedule of openings, fishing boundaries & in-season changes. 3/1/2016

2016 Deep Inlet Cost Recovery

- Cost Recovery Goal: \$1,799,000
- Estimated fish and % of return forecast @ price:

Price Fish (% of return)

- \$0.50 – 450K (25%)
- \$0.60 – 375K (21%)
- \$0.70 – 320K (18%)





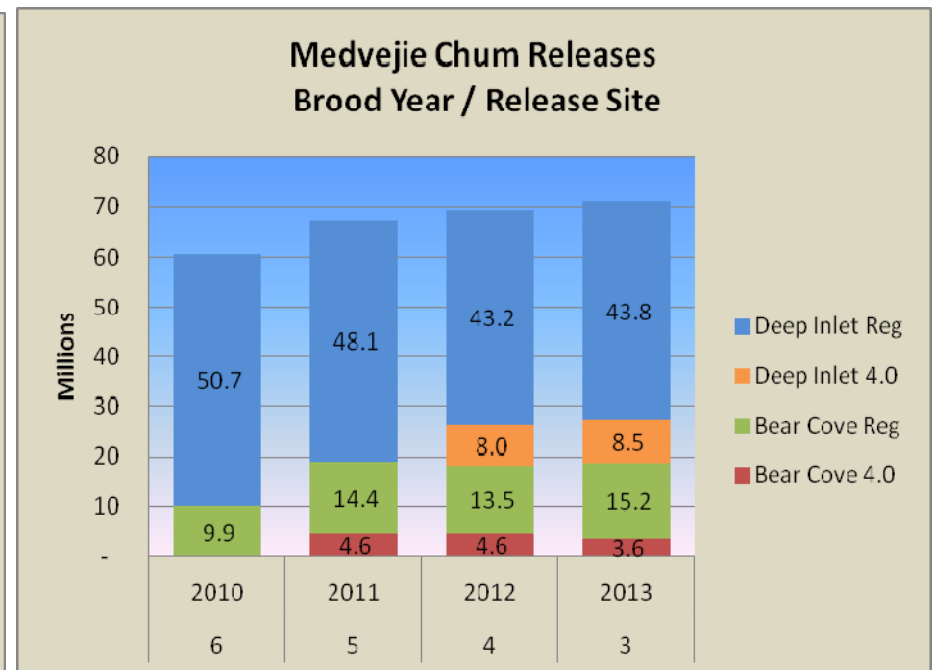
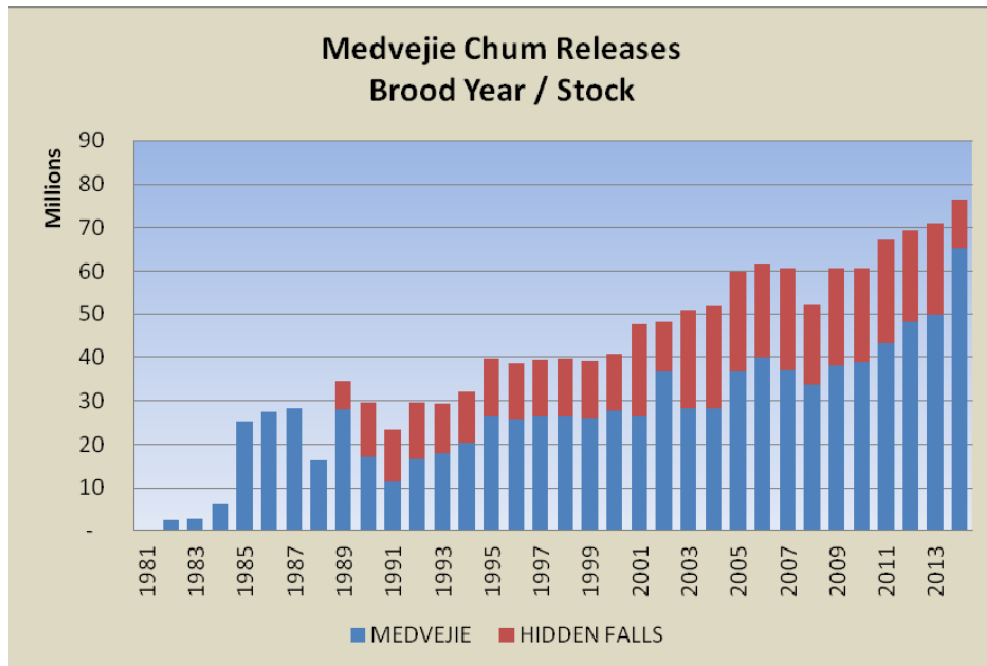
2016 Broodstock / CR Re-open

- Broodstock Goal: 90,000 fish
- Re-opening plan if a Deep Inlet closure for CR and / or broodstock is needed:
 - Re-open with a single troll day – the first day upon re-opening
 - NSRAA board decided NOT to allow the Troll day while CR is still in progress (Spring 2014).
 - Minimum of 24 hr notice; preferably 48 hrs.
 - We will attempt to close after a gillnet day, reopen (after troll) with a seine day, adjusting schedule as needed to maintain a 2:1 ratio for the season.



2016 Notes

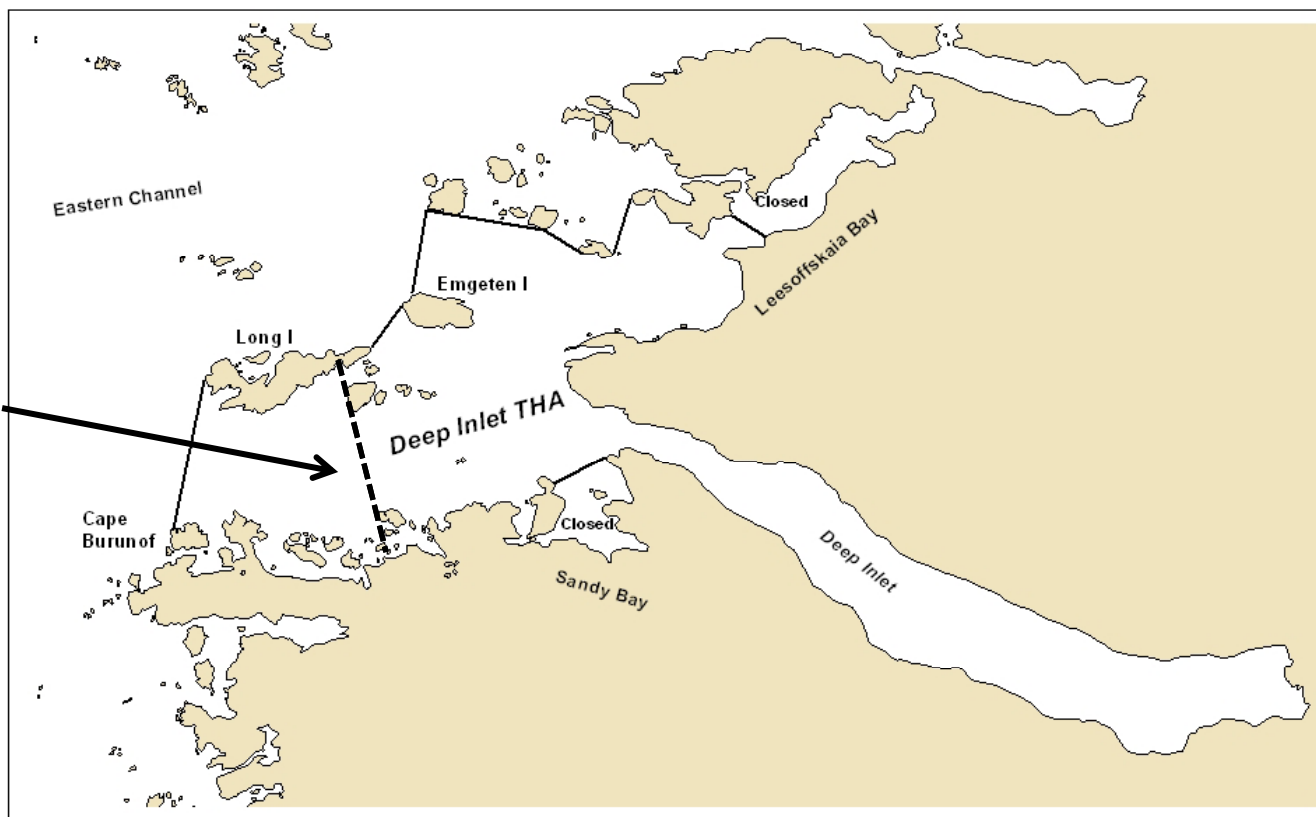
- BY11-12 (age 4-5) first BYs with increase Bear Cove release (18-19M)
- BY11-13 (age 3-5) ~20-25% Bear Cove are 4.0 program
- BY12-13 (age 3-4) ~16% Medvejie stock at Deep Inlet are 4.0 program





2016 Notes

Deep Inlet
boundary
through 3rd
Saturday in
June



Deep Inlet Terminal Harvest Area

Western line modification for early-season Chinook management. The Deep Inlet THA is closed west of 135 degrees 20.75' W Longitude to purse seine and drift gillnet from the first emergency order of the season through the third Saturday in June.

Deep Inlet Regs

5 AAC 33.376. District 13: Deep Inlet Terminal Harvest Area Salmon Management Plan (excerpt)

(1) salmon may be taken by purse seines and drift gillnets only during periods established by emergency order, as follows:

(A) openings for seines and gillnets must be rotated between net gear groups; the department, in consultation with NSRAA, shall close fishing between openings;

(B) **except as specified in (C) of this paragraph, the time ratio for gillnet openings to seine openings is two to one;**

(C) for the 2015 - 2017 seasons, **from the third Sunday in June through statistical week 30, the time ratio for gillnet openings to seine openings is one to one**, except that during the 2016 and 2017 seasons if the postseason preliminary enhanced salmon harvest value data from the previous season indicates the seine gear group is within that group's enhanced salmon allocation percentage range, based on the five-year rolling average as described in 5 AAC 33.364, the time ratio for gillnet openings to seine openings is two to one for the entire season;

(2) salmon may be taken by troll gear when the waters described in this subsection are closed to commercial net gear;

(3) the commissioner shall close the seasons in the waters described in this subsection to trolling during hatchery cost recovery periods;

For 2016:

gillnet to seine 2:1 May 29 – June 18

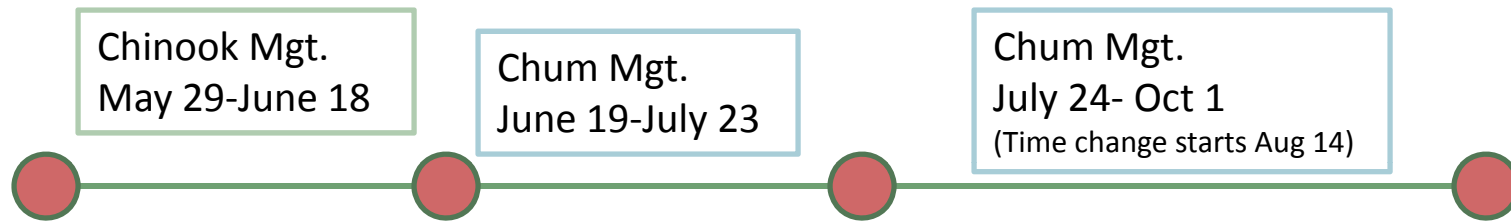
gillnet to seine 1:1 June 19 – July 23 (end stat week 30)

gillnet to seine 2:1 July 24 – end



2016 Schedule

Three periods of the Deep Inlet season:



2016

GN 2:1 SN

GN 1:1 SN

GN 2:1 SN

SUN - SN 5am – 8pm
 MON - GN 5am – 8pm
 TUE - GN 5am – 8pm
 WED - SN 5am – 8pm
 THU - GN 5am – 8pm
 FRI - GN 5am – 8pm
 SAT - TROLL

SUN - SN 5am – 8pm
 MON - GN 5am – 8pm
 TUE - GN 5am – 8pm
 WED - GN 5am – 8pm
 THU - SN 5am – 8pm
 FRI - SN 5am – 8pm
 SAT - TROLL

SUN - SN 5am – 8pm
 MON - GN 5am – 8pm
 TUE - GN 5am – 8pm
 WED - SN 5am – 8pm
 THU - GN 5am – 8pm
 FRI - GN 5am – 8pm
 SAT - TROLL

SUN - SN 6am – 9pm
 MON - GN 6am – 9pm
 TUE - GN 6am – 9pm
 WED - SN 6am – 9pm
 THU - GN 6am – 9pm
 FRI - GN 6am – 9pm
 SAT - TROLL

July 24 – Aug 13
 5 am – 8 pm

Aug 14 – Oct 1
 6 am – 9 pm

June 2016 Deep Inlet Schedule						
Sunday	Monday	Tuesday	Wednesday	Thursday	Friday	Saturday
May 29 Seine Chinook Mgt.	30 Gillnet	31 Gillnet	June 1 Seine	2 Gillnet	3 Gillnet	4 Troll
5	6	7	8	9	10	11
Chinook schedule: 4:2						
12	13	14	15	16	17	18
Gillnet fishermen will be required to fish a minimum mesh size of 6" prior to June 19						End Chinook Mgt.
19	20	21	22	23	24	25
Chum schedule: 3:3						
26	27	28	29	30	July 1	2

Season Opens Sunday, May 29.

Modified western THA boundary in effect until the 3rd Sunday in June. (June 19th this season.)

July 2016

Deep Inlet Schedule

Sunday	Monday	Tuesday	Wednesday	Thursday	Friday	Saturday
June 26 Seine	27 Gillnet	28 Gillnet	29 Gillnet	30 Seine	July 1 Seine	2 Troll
3	4	5	6	7	8	9
10	11	12	13	14	15	16
17	18	19	20	21	21	23
24/31 Seine	25 Gillnet	26 Gillnet	27 Seine	28 Gillnet	29 Gillnet	30 Troll

Chum schedule: 3:3

Chum schedule: 4:2

August 2016 Deep Inlet Schedule						
Sunday	Monday	Tuesday	Wednesday	Thursday	Friday	Saturday
31 Seine	Aug 1 Gillnet	2 Gillnet	3 Seine	4 Gillnet	5 Gillnet	6 Troll
7	8	9	10	11	12	13
14 6 am start	15 6 am start	16	17	18	19	20
21	22	23	24	25	26	27
28	29	30	31	Sept 1	2	3

Chum schedule: 4:2

September 2016

Deep Inlet Schedule

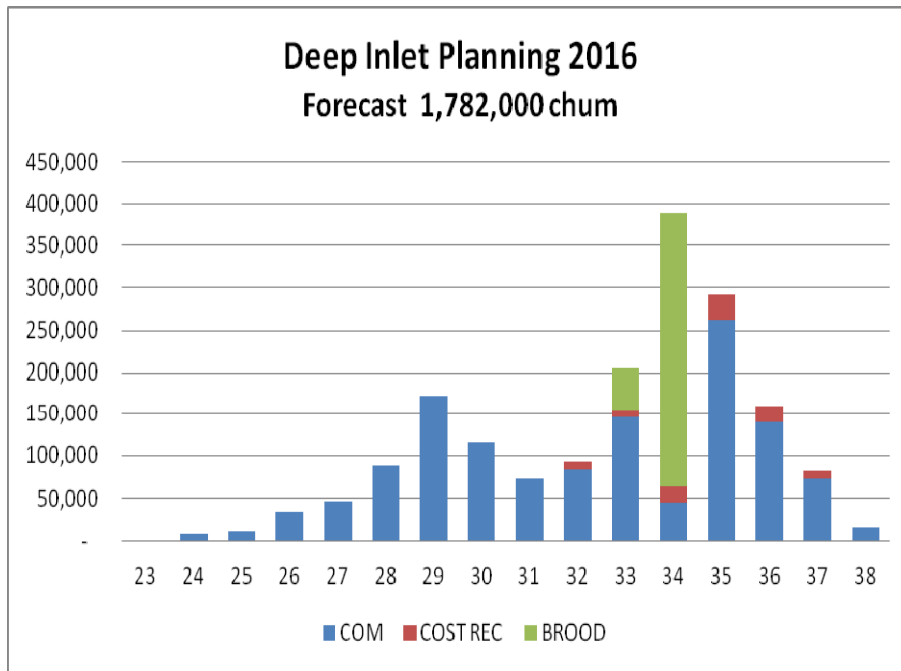
Sunday	Monday	Tuesday	Wednesday	Thursday	Friday	Saturday
28 Seine	29 Gillnet	30 Gillnet	31 Seine	Sept 1 Gillnet	2 Gillnet	3 Troll
4	5	6	7	8	9	10
11	12	13	14	15	16	17
18	19	20	21	22	23	24
25	26	27	29	29	30	Oct 1

Chum schedule: 4:2

2016 Cost Recovery Planning



2016 Deep Inlet Cost Recovery



Week End Date	WEEK	COMM	BROOD	CR	TOTAL
6/4/2016	23	1,000			1,000
6/11/2016	24	7,000			7,000
6/18/2016	25	10,000			10,000
6/25/2016	26	34,000			34,000
7/2/2016	27	46,000			46,000
7/9/2016	28	88,000			88,000
7/16/2016	29	172,000			172,000
7/23/2016	30	116,000			116,000
7/30/2016	31	72,000			72,000
8/6/2016	32	83,000	10,000		93,000
8/13/2016	33	145,000	10,000	50,000	205,000
8/20/2016	34	44,000	20,000	325,000	389,000
8/27/2016	35	262,000	30,000		292,000
9/3/2016	36	140,000	20,000		160,000
9/10/2016	37	72,000	10,000		82,000
9/17/2016	38	15,000			15,000
		1,307,000	100,000	375,000	1,782,000

A closure of Deep Inlet THA for Cost Recovery may be required this season, depending on run size and availability of cost recovery fish outside the THA. This chart shows possible timing. Actual timing may be earlier or later.

Cost Recovery Fishing Areas

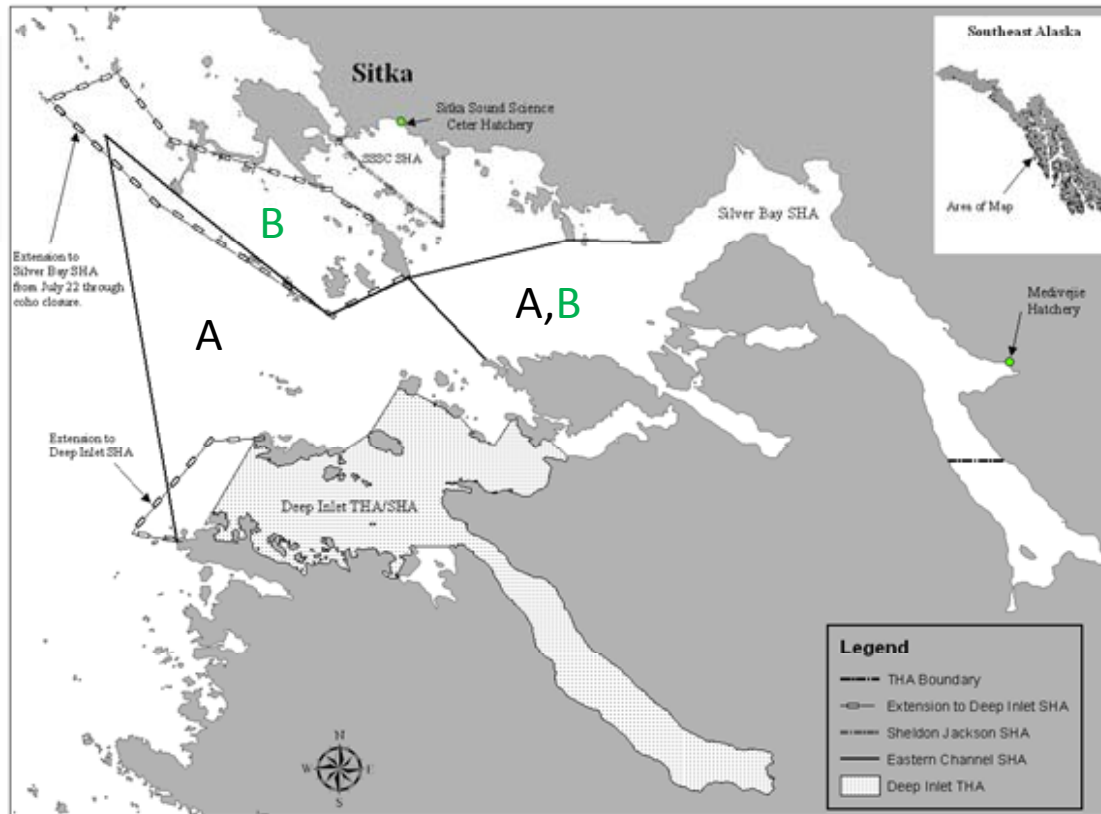


Figure 2. Silver Bay/Eastern Channel SHA and Deep Inlet SHA/THA for chum salmon (5 AAC 40.042(6) and (7), and 5 AAC 33.376(b)).

A — open July 1-21 (closes 12:01am on July 22)

B — open July 22 until day before coho fishing re-opens in Aug OR 12:01am Aug 20 if no coho closure

A — re-opens 12:01 am day before coho fishing re-opens in Aug OR 12:01am Aug 20 if no coho closure through Sept 15