



# Deep Inlet Schedule 2017

2017 Deep Inlet Forecast:

1,355,000 chum

Range (671,000 – 2,039,000)

Note: This document reflects pre-season planning. Always refer to ADF&G News Releases for official schedule of openings, fishing boundaries & in-season changes. 3/1/2017

# 2017 Deep Inlet Cost Recovery

- Cost Recovery Goal: \$2,000,000
- Estimated fish and % of return forecast @ price @ 7.5 pound average weight:

Price      Fish (% of return)

- \$0.75 – 355K (26%)
- \$0.85 – 315K (23%)
- \$1.00 – 265K (20%)





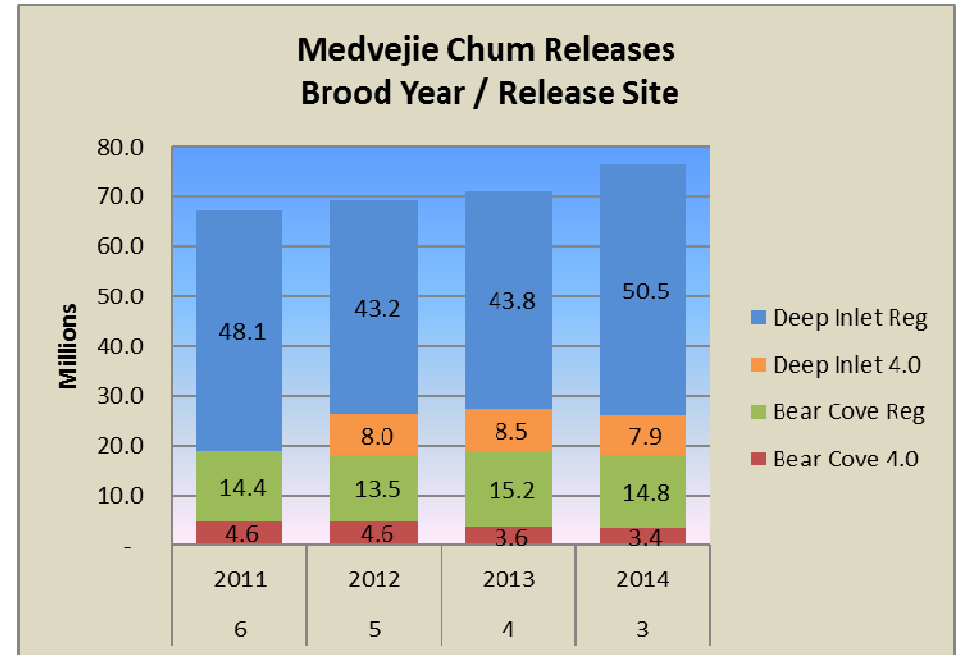
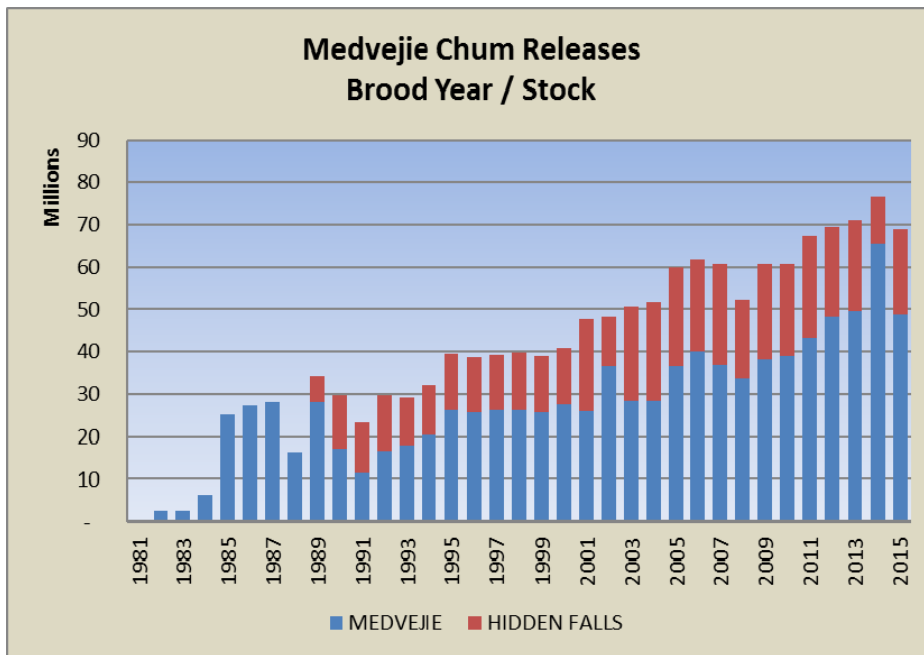
## 2017 Broodstock / CR Re-open

- Broodstock Goal: 100,000 fish
- Re-opening plan if a Deep Inlet closure for CR and / or broodstock is needed:
  - Re-open with a single troll day – the first day upon re-opening
    - NSRAA board decided NOT to allow the Troll day while CR is still in progress (Spring 2014).
    - Minimum of 24 hr notice; preferably 48 hrs.
  - We will attempt to close after a gillnet day, reopen (after troll) with a seine day, adjusting schedule as needed to maintain a 2:1 ratio for the season.



# 2017 Notes

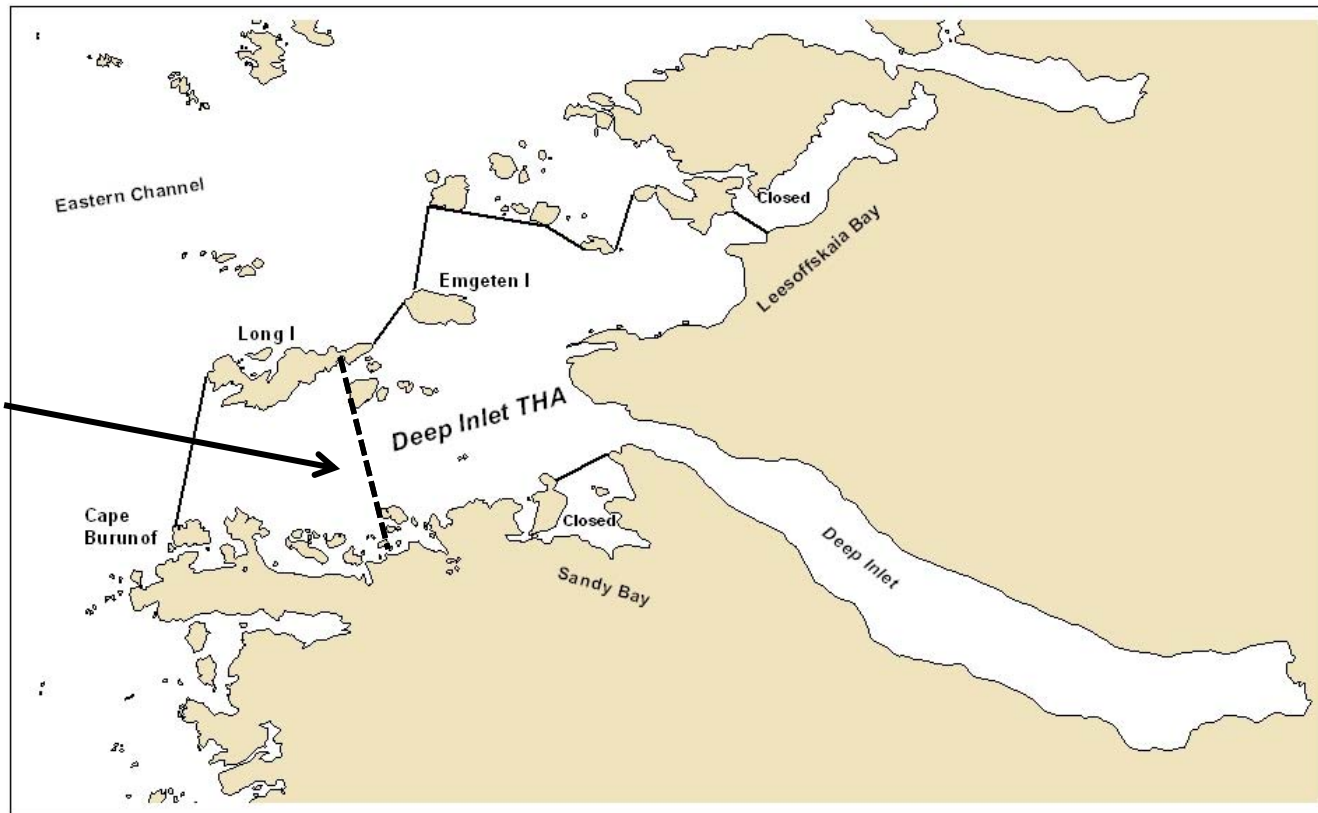
- BY11-14 (age 3-6) first time with all BYs at increased Bear Cove release (18-19M fry) ~ 20M eggs
- BY11-14 (age 3-6) ~20-25% Bear Cove are 4.0 program
- BY12-14 (age 3-5) ~13-16% Medvejie stock at Deep Inlet are 4.0 program
- BY14 (age 3) Largest release to date (76.5M) but only 11.1M HF stock





# 2017 Notes

Deep Inlet  
boundary  
through 3<sup>rd</sup>  
Saturday in  
June



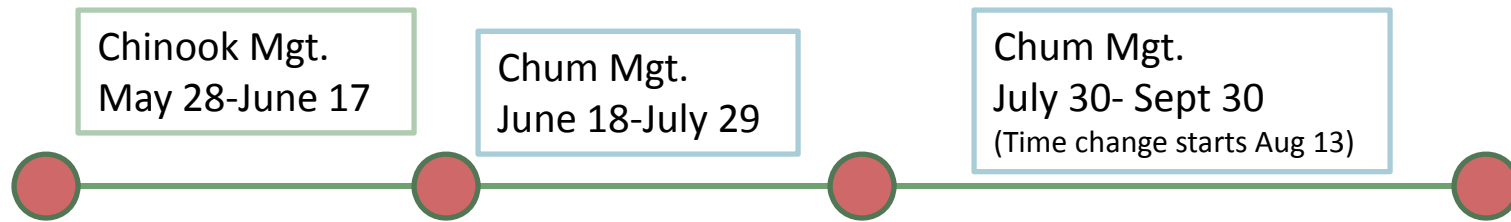
Deep Inlet Terminal Harvest Area

**Western line modification for early-season Chinook management. The Deep Inlet THA is closed west of 135 degrees 20.75' W Longitude to purse seine and drift gillnet from the first emergency order of the season through the third Saturday in June.**



# 2017 Schedule

Three periods of the Deep Inlet season:



2017

GN 2:1 SN

GN 1:1 SN

GN 2:1 SN

SUN - SN 5am – 8pm  
MON - GN 5am – 8pm  
TUE - GN 5am – 8pm  
WED - SN 5am – 8pm  
THU - GN 5am – 8pm  
FRI - GN 5am – 8pm  
SAT - TROLL

SUN - SN 5am – 8pm  
MON - GN 5am – 8pm  
TUE - GN 5am – 8pm  
WED - GN 5am – 8pm  
THU - SN 5am – 8pm  
FRI - SN 5am – 8pm  
SAT - TROLL

SUN - SN 5am – 8pm  
MON - GN 5am – 8pm  
TUE - GN 5am – 8pm  
WED - SN 5am – 8pm  
THU - GN 5am – 8pm  
FRI - GN 5am – 8pm  
SAT - TROLL

SUN - SN 6am – 9pm  
MON - GN 6am – 9pm  
TUE - GN 6am – 9pm  
WED - SN 6am – 9pm  
THU - GN 6am – 9pm  
FRI - GN 6am – 9pm  
SAT - TROLL

July 30 – Aug 12  
5 am – 8 pm

Aug 13 – Sept 30  
6 am – 9 pm

June 2017 Deep Inlet Schedule						
Sunday	Monday	Tuesday	Wednesday	Thursday	Friday	Saturday
May 28 Seine Chinook Mgt.	29 Gillnet	30 Gillnet	31 Seine	June 1 Gillnet	2 Gillnet	3 Troll
4	5	6	7	8	9	10
Chinook schedule: 4:2						
11	12	13	14	15	16	17
Gillnet fishermen will be required to fish a minimum mesh size of 6" prior to June 18						End Chinook Mgt.
18	19	20	21	22	23	24
Chum schedule: 3:3						
25	26	27	28	29	30	July 1

Season Opens Sunday, May 28.

Modified western THA boundary in effect until the 3<sup>rd</sup> Sunday in June. (June 18th this season.)

July 2017

### Deep Inlet Schedule

Sunday	Monday	Tuesday	Wednesday	Thursday	Friday	Saturday
June 25 Seine	26 Gillnet	27 Gillnet	28 Gillnet	29 Seine	30 Seine	July 1 Troll
2	3	4	5	6	7	8
9	10	11	12	13	14	15
16	17	18	19	20	21	22
23/30 Seine	24/31 Gillnet	25 Gillnet	26 Gillnet	27 Seine	28 Seine	29 Troll

Chum schedule: 3:3



August 2017

### Deep Inlet Schedule

Sunday	Monday	Tuesday	Wednesday	Thursday	Friday	Saturday
30 Seine	31 Gillnet	Aug 1 Gillnet	2 Seine	3 Gillnet	4 Gillnet	5 Troll
6	7	8	9	10	11	12
13 6 am start	14 6 am start	15	16	17	18	19
20	21	22	23	24	25	26
27	28	29	30	30	Sept 1	2

Chum schedule: 4:2

September 2017

### Deep Inlet Schedule

Sunday	Monday	Tuesday	Wednesday	Thursday	Friday	Saturday
27 Seine	28 Gillnet	29 Gillnet	30 Seine	31 Gillnet	Sept 1 Gillnet	2 Troll
3	4	5	6	7	8	9
10	11	12	13	14	15	16
17	18	19	20	21	22	23
24	25	26	27	28	29	30

Chum schedule: 4:2