



# Deep Inlet Schedule 2018

2018 Deep Inlet Forecast:

1,250,000 chum

Range (603,000 – 1,900,000)

Note: This document reflects pre-season planning. Always refer to ADF&G News Releases for official schedule of openings, fishing boundaries & in-season changes. 3/6/2018

# 2018 Deep Inlet Cost Recovery

- Cost Recovery Goal: **NO COST RECOVERY PLANNED**
- Estimated fish and % of return forecast @ price @ 7.5 pound average weight:

Price                  Fish (% of return)

- \$0.75 – 0 (0%)
- \$0.85 – 0 (0%)
- \$1.00 – 0 (0%)





## 2018 Broodstock / CR Re-open

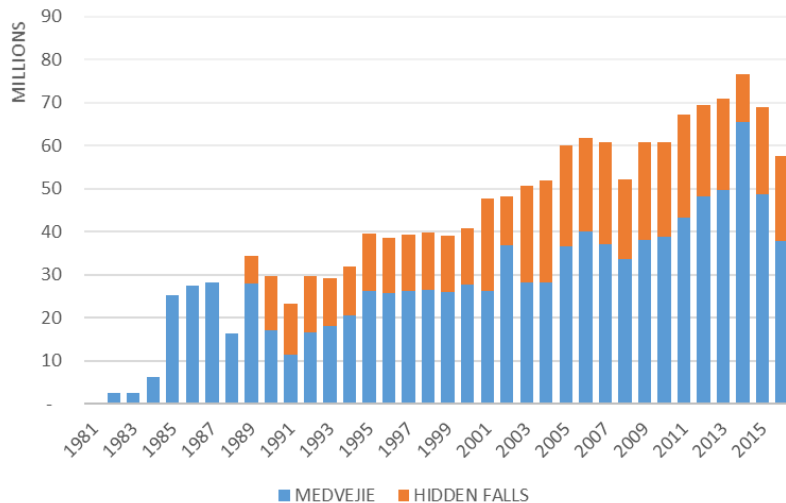
- Broodstock Goal: 100,000 fish
- Re-opening plan if a Deep Inlet closure for broodstock is needed:
  - Re-open with a single troll day – the first day upon re-opening
    - NSRAA board decided NOT to allow the Troll day while CR is still in progress (Spring 2014).
    - Minimum of 24 hr notice; preferably 48 hrs.
  - We will attempt to close after a gillnet day, reopen (after troll) with a seine day, adjusting schedule as needed to maintain a 1:2 ratio for the season.



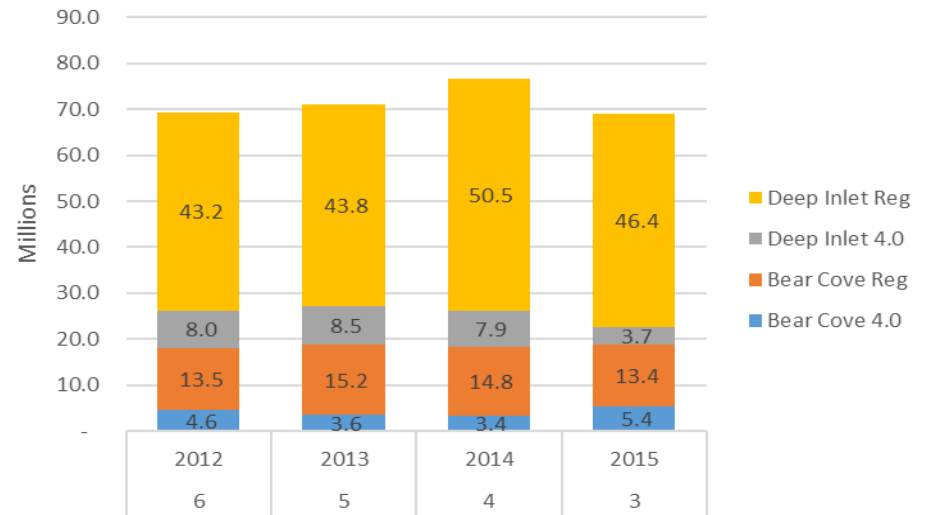
# 2018 Notes

- BY12-15 (age 3-6) 2<sup>nd</sup> year with all BYs at increased Bear Cove release (18-19M fry) ~ 20M eggs
- BY12-15 (age 3-6) ~20-30% Bear Cove are 4.0 program
- BY12-15 (age 3-6) ~7-16% Deep Inlet are 4.0 program
- BY14 (age 4) Largest release to date (76.5M) but only 11.1M HF stock

**MEDVEJIE CHUM RELEASES  
BROOD YEAR / STOCK**

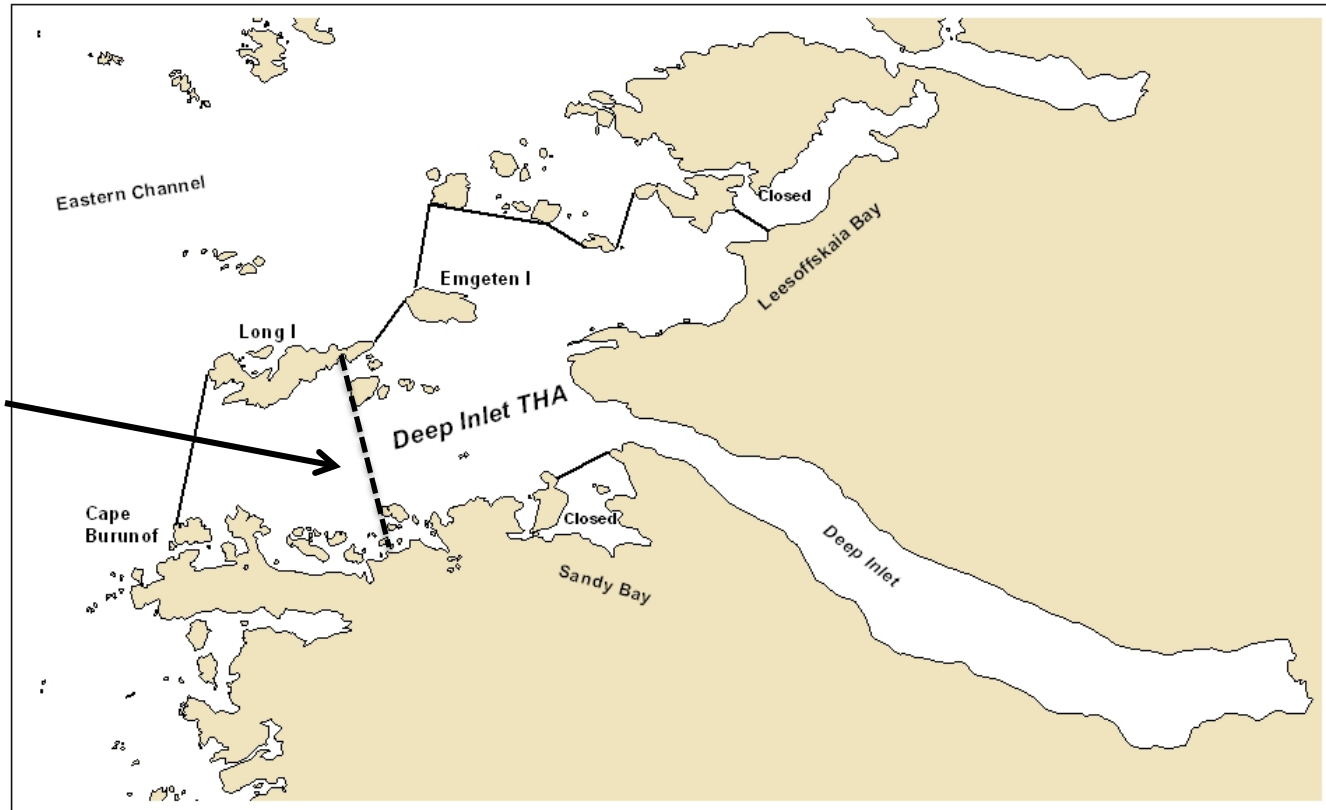


**Medvejie Chum Releases  
Brood Year / Release Site**





# 2018 Notes



Deep Inlet boundary through 3<sup>rd</sup> Saturday in June

Deep Inlet Terminal Harvest Area

**Western line modification for early-season Chinook management. The Deep Inlet THA is closed west of 135 degrees 20.75' W Longitude to purse seine and drift gillnet from the first emergency order of the season through the third Saturday in June.**



# 2018 Schedule

Three periods of the Deep Inlet season:

Chinook Mgt.  
May 1 - June 16

Chum Mgt.  
June 17 - July 28

Chum Mgt.  
July 29 - Sept 30  
(Time change starts Aug 12)

2018

GN 1:2 SN

GN 1:2 SN

GN 1:2 SN

ENTIRE PERIOD: TROLL  
EXCEPT:  
May 1 Seine (24-hr)  
May 2 Gillnet (12-hr)  
June 3 & 10 Seine –  
24-hrs from 5am  
June 9 & 16 Gillnet  
12-hrs 6am – 6pm

SUN - SN 5am – 8pm  
MON - TROLL  
TUE - GN 5am – 8pm  
WED - GN 5am – 8pm  
THU - SN 5am – 8pm  
FRI - SN 5am – 8pm  
SAT - SN 5am – 8pm

SUN - SN 5am – 8pm  
MON - TROLL  
TUE - GN 5am – 8pm  
WED - GN 5am – 8pm  
THU - SN 5am – 8pm  
FRI - SN 5am – 8pm  
SAT - SN 5am – 8pm

SUN - SN 6am – 9pm  
MON - TROLL  
TUE - GN 6am – 9pm  
WED - GN 6am – 9pm  
THU - SN 6am – 9pm  
FRI - SN 6am – 9pm  
SAT - SN 6am – 9pm

July 29 – Aug 11  
5 am – 8 pm

Aug 12 – Sept 30  
6 am – 9 pm

May 2018

## Deep Inlet Schedule

Sunday	Monday	Tuesday	Wednesday	Thursday	Friday	Saturday
Apr 29	30	May 1 Seine (24 hr) Chinook Mgt.	2 Gillnet (12 hr)	3 Troll	4 Troll	5 Troll
6	7	8	9	10	11	12
13	14	15	16	17	18	19
20	21	22	23	24	25	26
27	28	29	30	31	June 1	2

Season Opens Tuesday, May 1

Modified western THA boundary in effect until the 3<sup>rd</sup> Sunday in June. (June 17th this season.)

Chinook may schedule: 1GN : 2SN

*Gillnet fishermen will be required to fish a minimum mesh size of 6" prior to June 16*

June 2018

## Deep Inlet Schedule

Sunday	Monday	Tuesday	Wednesday	Thursday	Friday	Saturday	
May 27 Troll Chinook Mgt.	28 Troll	29 Troll	30 Troll	31 Troll	June 1 Troll	2 Troll	
3 Seine 24 hr 5am – 5am	4 Troll 5:01 am	<i>Gillnet fishermen will be required to fish a minimum mesh size of 6" prior to June 16</i>				8	9 Gillnet 12 hr 6am - 6pm
10 Seine 24 hr 5am – 5am	11 5:01 am	12	13	14	15	16 Gillnet 12 hr 6am - 6pm End Chinook Mgt.	
17	18	19	20	21	22	23	
24	25	26	27	28	29	30	

Season Opens Sunday, May 1 (Troll)

Modified western THA boundary in effect until the 3<sup>rd</sup> Sunday in June. (June 17<sup>th</sup> this season.)

Chinook & chum schedule: 1GN : 2SN



July 2018

### Deep Inlet Schedule

Sunday	Monday	Tuesday	Wednesday	Thursday	Friday	Saturday
July 1 Seine	2 Troll	3 Gillnet	4 Gillnet	5 Seine	6 Seine	7 Seine
8	9	10	11	12	13	14
15	16	17	18	19	20	21
22	23	24	25	26	27	28
29	30	31	Aug 1	2	3	4

Chum schedule: 1GN : 2SN

August 2018

## Deep Inlet Schedule

Sunday	Monday	Tuesday	Wednesday	Thursday	Friday	Saturday
29 Seine	30 Troll	31 Gillnet	Aug 1 Gillnet	2 Seine	3 Seine	4 Seine
5	6	7	8	9	10	11
12 6 am start	13 6 am start	14	15	16	17	18
19	20	21	22	23	24	25
26	27	28	29	30	31	Sept 1

Chum schedule: 1GN : 2SN

September 2018

Deep Inlet Schedule

Sunday	Monday	Tuesday	Wednesday	Thursday	Friday	Saturday
26 Seine	27 Troll	28 Gillnet	29 Gillnet	30 Seine	31 Seine	Sept 1 Seine
2	3	4	5	6	7	8
9	10	11	12	13	14	15
16	17	18	19	20	21	22
23/30	24	25	26	27	28	29

Chum schedule: 1GN : 2SN